



## PRESSURE BRAND CAST STEEL SWING CHECK VALVE FLANGED, CLASS-150 (IBR APPROVED)

### PRODUCT DESCRIPTION

- **Product** : 'PRESSURE' Cast Steel Swing Check Valve
- **Product Standard** : BS 1868 / ANSI B16.34
- **Pressure / Class / Rating** : Class-150
- **Body Material cum Standard** : CCS (ASTM A216 Gr.WCB)
- **Description** : Bolted Cover
- **Type of Seat** : Renewable seat
- **Type of Disc** : Renewable disc
- **Hinge Pin** : SS AISI-410
- **End Details** : Flanges as per ANSI B 16.5 Class 150 R.F. drilled

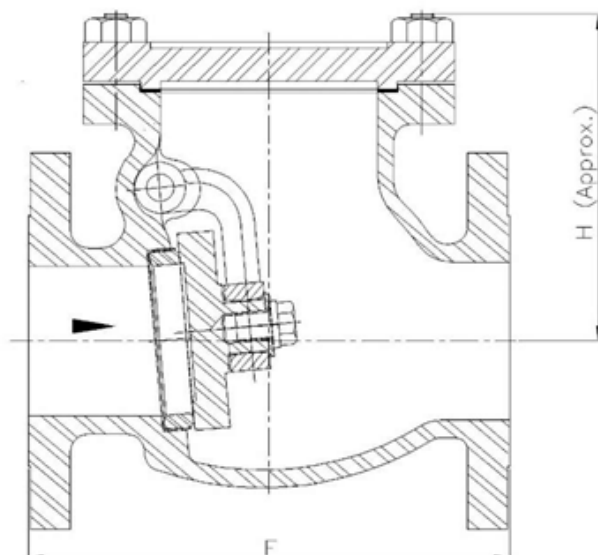
HSN 84813000

### APPLICATION

Water	Oil	Steam
-------	-----	-------

### TESTING & CERTIFICATION

- **Body Test Pressure** : 32 Bar g Hyd. (435 Psig)
- **Seat Test Pressure** : 22 Bar g Hyd. (320 Psig)
- Seat is also tested at low pressure of 25% of the above test
- **Tested as per API 598 / ANSI B16.34 / BS : 6755 Part 1**
- **Max Working Temperature**: 400°C
- Test Certificate in Form III-C as per IBR is furnished with every supply.



**Reg. Office** : 9, Amar Asha Society, Nr. Ramvadi Bus Stop, Isanpur, Ahmedabad-382443. Gujarat, India. **Ph.** : +91 7490034801, 9824334801  
**Factory & Correspondence Address** : 16, Ambica Industrial Estate, Nr. Vatva Railway Over Bridge, Vatva, Ahmedabad-382440, Gujarat, India.  
**Ph.** : +91 8320479614, 6354226326 **E-mail** : info@pressurevalves.in, marketing@pressurevalves.in **Web** : www.pressurevalves.in



## PRESSURE BRAND CAST STEEL SWING CHECK VALVE FLANGED, CLASS-150 (IBR APPROVED)

### SIZES / DIMENSIONS

Nominal Size	Nominal Size (Inches)	F	H (Approx)	D	T	R
25	1	127±2	115	110	11.6	50.8
40	1.1/2	165±2	125	125	14.7	73
50	2	203±2	140	150	16.3	92.1
65	2.1/2	216±2	155	180	17.9	104.8
80	3	241±2	175	190	19.5	127
100	4	292±2	200	230	24.3	157.2
125	5	330±2	210	255	24.3	185.7
150	6	356±2	240	280	25.9	215.9
200	8	495±3	275	345	29	269.9

### MATERIALS OF CONSTRUCTION

Components	Materials	Specifications
Body, Cover, Valve Disc	Cast Carbon Steel	ASTM A216 Gr.WCB
Gasket	CAF	BS:1832
Body Rings, Disc Seat, Pin & Side Plugs	Stainless Steel	AISI-410
Bolts	Alloy Steel	ASTM A193 Gr.B7
Nuts	HT Steel	ASTM A194 Gr.2H
Lever	M.I. / S.G. Iron	—

**Notes :** 1. Product images are for illustration purposes only. Actual product may vary.

2. Actual dimensions may change over time, due to continual design improvements. Please confirm before placing order

**Reg. Office :** 9, Amar Asha Society, Nr. Ramvadi Bus Stop, Isanpur, Ahmedabad-382443. Gujarat, India. **Ph. :** +91 7490034801, 9824334801

**Factory & Correspondence Address :** 16, Ambica Industrial Estate, Nr. Vatva Railway Over Bridge, Vatva, Ahmedabad-382440, Gujarat, India.

**Ph. :** +91 8320479614, 6354226326 **E-mail :** info@pressurevalves.in, marketing@pressurevalves.in **Web :** www.pressurevalves.in

Approved by  
**NSIC**  
एन एस आई सी

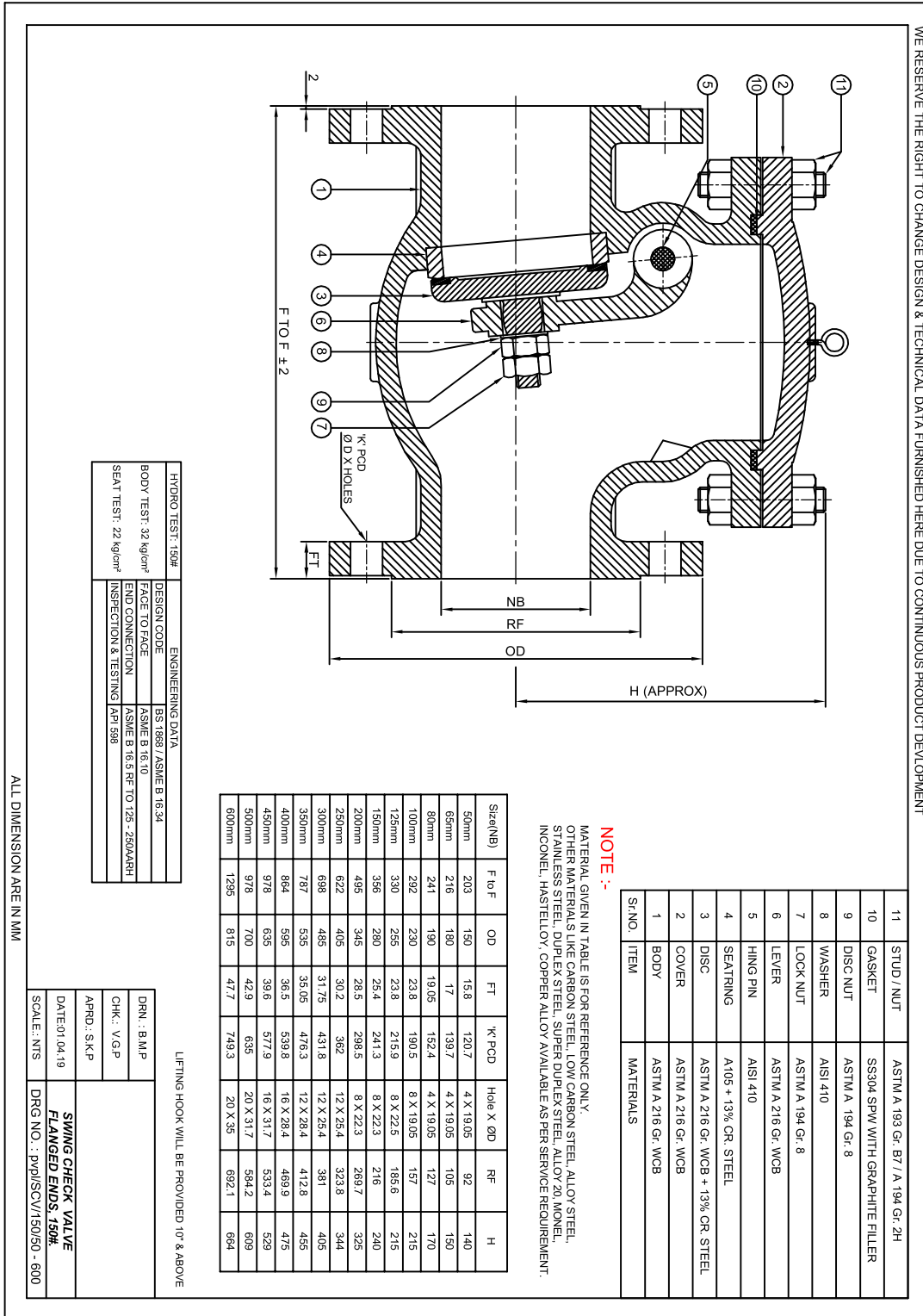


**IBR**  
Approved

**MANUFACTURER OF INDUSTRIAL VALVES AND GEARS**



## PRESSURE BRAND CAST STEEL SWING CHECK VALVE FLANGED, CLASS-150 (IBR APPROVED)



Reg. Office : 9, Amar Asha Society, Nr. Ramvadi Bus Stop, Isanpur, Ahmedabad-382443. Gujarat, India. Ph. : +91 7490034801, 9824334801  
 Factory & Correspondence Address : 16, Ambica Industrial Estate, Nr. Vatva Railway Over Bridge, Vatva, Ahmedabad-382440, Gujarat, India.  
 Ph. : +91 8320479614, 6354226326 E-mail : info@pressurevalves.in, marketing@pressurevalves.in Web : www.pressurevalves.in