



PRESSURE BRAND CAST STEEL GATE VALVE FLANGED, CLASS-600

PRODUCT DESCRIPTION

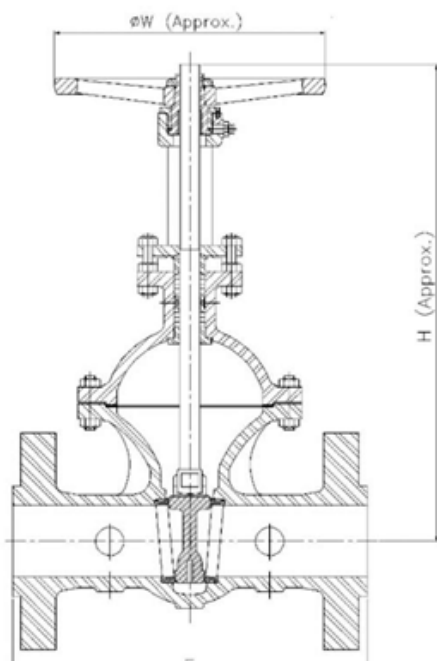
- **Product** : PRESSURE Cast Steel Gate Valve
- **Product Standard** : Conforming to API 600 / BS-1414/API 6D
- **Type of Pattern** : Straight Type
- **Pressure / Class Rating** : Class 600
- **Body Material cum standard** : CCS (ASTM A-216 Gr. WCB)
- **Product Description** : Bolted Bonnet O/S Yoke Type Rising Stem
- **Type of Seat** : Renewable
- **Type of Wedge** : Solid/Flexible Wedge
- **Trim** : SS AISI-410 & Aluminium Bronze Sleeves
- **End Details** : Flanges as per ASME B 16.5 Class 600 RF drilled

HSN 84818030



TESTING & CERTIFICATION

- **Body Test Pressure** : 158 Barg (2220 Psig.)
- **Hyd. Seat Test Pressure** : 110 Barg (1630 Psig.)
- **Hyd. Seat Test Pressure** : 6.9barg 100 Psig. (AIR)
- Our Works' Test Certificate is furnished with every supply.



DIMENSIONS (IN MM)

Nominal Size	Nominal Size (Inches)	F	H (Approx.)	W Approx
40	1.1/2	241	350	229
50	2	292	400	229
65	2.1/2	330	425	229
80	3	356	465	254
100	4	432	560	305
125	5	508	665	405
150	6	559	760	450
200	8	660	925	500

Reg. Office :9, Amar Asha Society, Nr. Ramvadi Bus Stop, Isanpur, Ahmedabad-382443. Gujarat, India. **Ph.** : +91 7490034801, 9824334801

Factory & Correspondence Address : 16, Ambica Industrial Estate, Nr. Vatva Railway Over Bridge, Vatva, Ahmedabad-382440, Gujarat, India.

Ph. : +91 8320479614, 6354226326 **E-mail** : info@pressurevalves.in, marketing@pressurevalves.in **Web** : www.pressurevalves.in

Approved by



MANUFACTURER OF INDUSTRIAL VALVES AND GEARS



PRESSURE BRAND CAST STEEL GATE VALVE FLANGED, CLASS-600

MATERIALS OF CONSTRUCTION

Components	Materials	Specifications
Body, Bonnet, Yoke, Gland Flange	Cast Carbon Steel	ASTM A216 Gr.WCB
Wedge	Cast Carbon Steel with SS Weld Deposit	ASTM A216 Gr.WCB / AISI-410
Gasket	Spiral Wound S.S. 316	AISI-316
Gland Packing	Expanded Pure Flexible Graphite	—
Handwheel	Malleable Iron	IS:14329
Body Rings, Gland Yoke Follower,	Stainless Steel	
Sleeve Nut, Stem, Backseat Bush, Locking Screws	Carbon Steel	AISI-410
Gland Bolting	Alloy Steel	UTS 392 N/mm ²
Bolts	HT Steel	ASTM A193 Gr.B7
Nuts	HT Steel	ASTM A194 Gr.2H
Yoke Sleeve	Al Bronze	—

- Notes :** 1. Product images are for illustration purposes only. Actual product may vary.
2. Actual dimensions may change over time, due to continual design improvements. Please confirm before placing order.

Reg. Office : 9, Amar Asha Society, Nr. Ramvadi Bus Stop, Isanpur, Ahmedabad-382443. Gujarat, India. **Ph. :** +91 7490034801, 9824334801
Factory & Correspondence Address : 16, Ambica Industrial Estate, Nr. Vatva Railway Over Bridge, Vatva, Ahmedabad-382440, Gujarat, India.
Ph. : +91 8320479614, 6354226326 **E-mail :** info@pressurevalves.in, marketing@pressurevalves.in **Web :** www.pressurevalves.in

Approved by
NSIC
एन एस आई सी

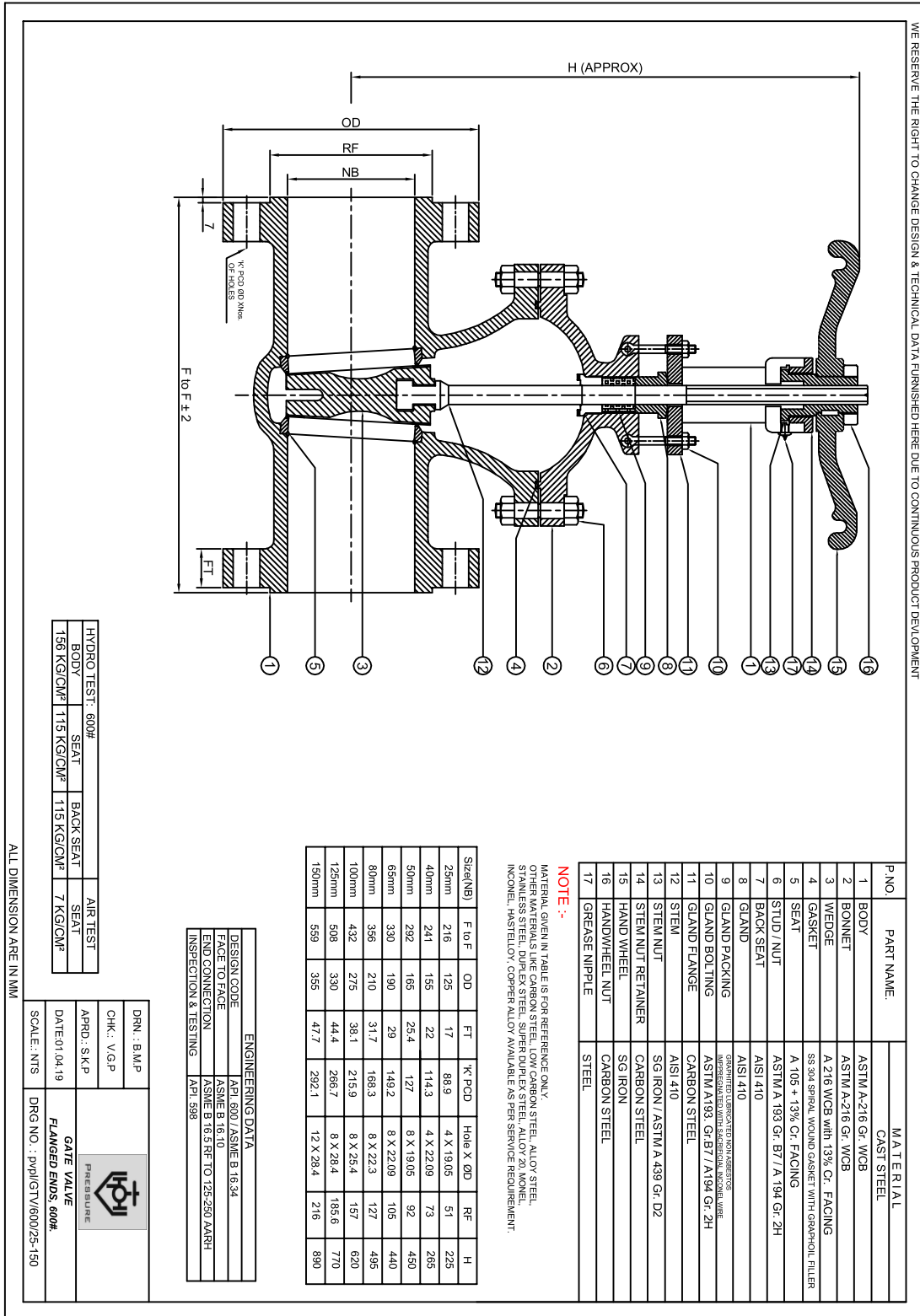


IBR
Approved

MANUFACTURER OF INDUSTRIAL VALVES AND GEARS



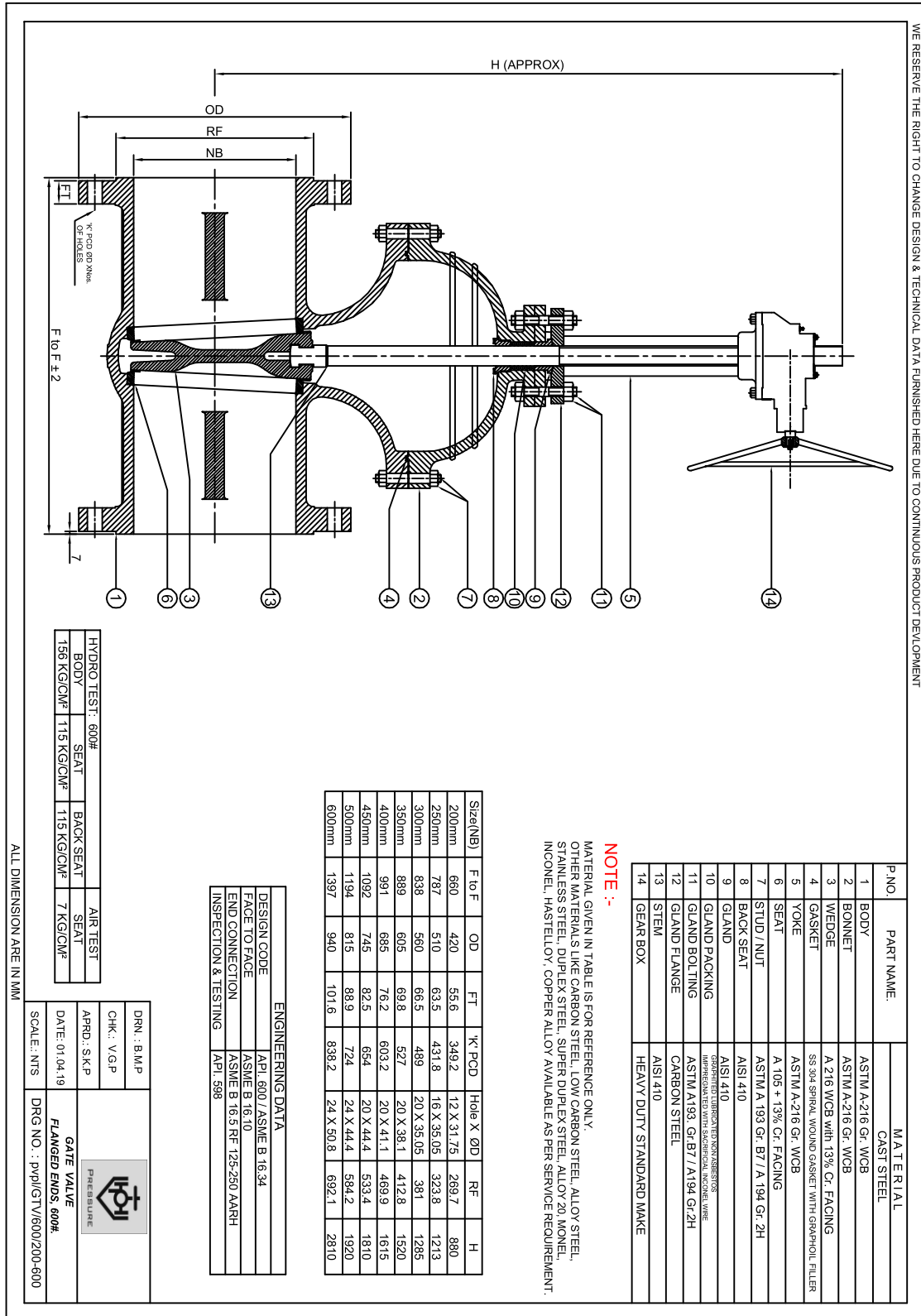
PRESSURE BRAND CAST STEEL GATE VALVE FLANGED, CLASS-600



Reg. Office : 9, Amar Asha Society, Nr. Ramvadi Bus Stop, Isanpur, Ahmedabad-382443. Gujarat, India. Ph. : +91 7490034801, 9824334801
 Factory & Correspondence Address : 16, Ambica Industrial Estate, Nr. Vatva Railway Over Bridge, Vatva, Ahmedabad-382440, Gujarat, India.
 Ph. : +91 8320479614, 6354226326 E-mail : info@pressurevalves.in, marketing@pressurevalves.in Web : www.pressurevalves.in



PRESSURE BRAND CAST STEEL GATE VALVE FLANGED, CLASS-600



WE RESERVE THE RIGHT TO CHANGE DESIGN & TECHNICAL DATA FURNISHED HERE DUE TO CONTINUOUS PRODUCT DEVELOPMENT

P NO.	PART NAME	MATERIAL
1	BODY	ASTM A-216 Gr. WCB CAST STEEL
2	BONNET	ASTM A-216 Gr. WCB
3	WEDGE	A 216 WCB with 13% Cr FACING
4	GASKET	SS 304 SPIRAL WOUND GASKET WITH GRAPHITE FILLER
5	YOKE	ASTM A-216 Gr. WCB
6	SEAT	A 105 + 13% Cr FACING
7	STUD / NUT	ASTM A 193 Gr. B7 / A 194 Gr. 2H
8	BACK SEAT	ASTM A 193 Gr. B7 / A 194 Gr. 2H
9	GLAND	ASTM A 193 Gr. B7 / A 194 Gr. 2H
10	GLAND PACKING	ASTM A 193 Gr. B7 / A 194 Gr. 2H
11	GLAND BOLTING	ASTM A 193 Gr. B7 / A 194 Gr. 2H
12	GLAND FLANGE	CARBON STEEL
13	STEM	ASTM A 193 Gr. B7 / A 194 Gr. 2H
14	GEAR BOX	HEAVY DUTY STANDARD MAKE

NOTE :-
MATERIAL GIVEN IN TABLE IS FOR REFERENCE ONLY.
OTHER MATERIALS LIKE CARBON STEEL, LOW CARBON STEEL, ALLOY STEEL, STAINLESS STEEL, DUPLEX STEEL, SUPER DUPLEX STEEL, ALLOY 20 MONEL, INCONEL, HASTELLOY, COPPER ALLOY AVAILABLE AS PER SERVICE REQUIREMENT.

Size(NB)	F to F	OD	FT	W. PCD	Hole X ØD	RF	H
200mm	660	420	55.6	349.2	12 X 31.75	269.7	880
250mm	787	510	63.5	431.8	16 X 35.05	323.8	1213
300mm	838	560	66.5	489	20 X 35.05	381	1285
350mm	889	605	69.8	527	20 X 38.1	412.8	1320
400mm	991	685	76.2	603.2	20 X 41.3	469.9	1615
450mm	1092	745	82.5	664	20 X 44.4	533.4	1810
500mm	1194	815	88.9	724	24 X 44.4	584.2	1920
600mm	1397	940	101.6	838.2	24 X 50.8	692.1	2810

ENGINEERING DATA	
DESIGN CODE	API 600 / ASME B 16.34
FACE TO FACE	ASME B 16.10
END CONNECTION	ASME B 16.5 RF 125-250 AARR
INSPECTION & TESTING	API 598

HYDRO TEST: 600#	SEAT	BACK SEAT	AIR TEST
BODY	115 KG/CM ²	115 KG/CM ²	SEAT
156 KG/CM ²		7 KG/CM ²	

ALL DIMENSION ARE IN MM

DRN.: B.M.P	
CHK.: V.G.P	
APRD.: S.K.P	GATE VALVE FLANGED ENDS 600#
DATE: 01.04.19	
SCALE: NTS	DRG NO.: pvp/IG/V/600/200-600

Reg. Office : 9, Amar Asha Society, Nr. Ramvadi Bus Stop, Isanpur, Ahmedabad-382443. Gujarat, India. **Ph. :** +91 7490034801, 9824334801
Factory & Correspondence Address : 16, Ambica Industrial Estate, Nr. Vatva Railway Over Bridge, Vatva, Ahmedabad-382440, Gujarat, India.
Ph. : +91 8320479614, 6354226326 **E-mail :** info@pressurevalves.in, marketing@pressurevalves.in **Web :** www.pressurevalves.in