



PRESSURE BRAND CAST STEEL GATE VALVE FLANGED, CLASS-300 (IBR APPROVED)

PRODUCT DESCRIPTION

- **Product** : 'PRESSURE' Cast Steel Gate Valve
- **Product Standard** : API 600 / BS 1414 / API 6D
- **Pressure / Class / Rating** : Class 300
- **Body Material cum Standard** : CCS (ASTM A216 Gr.WCB)
- **Description** : Bolted Bonnet, Outside Screw & Yoke Type, Rising Stem
- **Type of Seat** : Renewable seat
- **Type of Disc** : Renewable disc
- **Trim** : Steam SS AISI-410
- **Yoke Sleeve** : AISI-410 /Aluminum Bronze
- **Gland Packing** : Expanded Pure Flexible Graphite
- **End Details** : Flanges as per ANSI B 16.5 Class 300 R.F.drilled

HSN 84818030

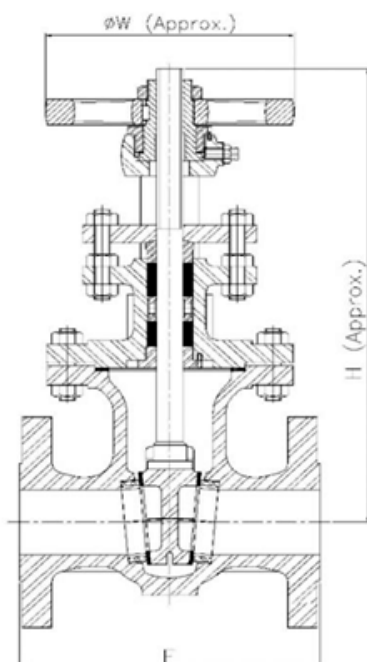
APPLICATION

| | | |
|-------|-----|-------|
| Water | Oil | Steam |
|-------|-----|-------|

TESTING & CERTIFICATION

- **Body Test Pressure** : 80 Bar g (1110 Psig) Hyd.
- **Seat Test Pressure** : 58 Bar g (815 Psig) Hyd. & 6.9 Bar g (100 Psig) Air
- **Tested as per** API 598 / ANSI B16.34 / BS : 6755 Part 1
- **Maximum Working Temperature**: 425°C

Test Certificate in Form III-C as per IBR is furnished with every supply



Reg. Office :9, Amar Asha Society, Nr. Ramvadi Bus Stop, Isanpur, Ahmedabad-382443. Gujarat, India. **Ph.** : +91 7490034801, 9824334801

Factory & Correspondence Address : 16, Ambica Industrial Estate, Nr. Vatva Railway Over Bridge, Vatva, Ahmedabad-382440, Gujarat, India.

Ph. : +91 8320479614, 6354226326 **E-mail** : info@pressurevalves.in, marketing@pressurevalves.in **Web** : www.pressurevalves.in

Approved by



MANUFACTURER OF INDUSTRIAL VALVES AND GEARS



PRESSURE BRAND CAST STEEL GATE VALVE FLANGED, CLASS-300 (IBR APPROVED)

MATERIALS OF CONSTRUCTION

| Components | Material | Specifications |
|--|--|-----------------------------|
| Body, Bonnet, Yoke, Gland Flange | Cast Carbon Steel | ASTM A216 Gr.WCB |
| Wedge (for 2" or less) | Stainless Steel | AISI-410 / CA15 |
| Wedge (above 2") | Cast Carbon Steel with SS Weld Deposit | ASTM A216 Gr.WCB / AISI-410 |
| Gasket | Spiral Wound S.S. 316 | AISI-316 |
| Gland Packing | Expanded Pure Flexible Graphite | — |
| Handwheel | Malleable Iron | IS:14329 |
| Body Rings, Gland Yoke Follower, Sleeve Nut, Stem, Backseat Bush, Locking Screws | Stainless Steel Carbon Steel | AISI-410 |
| Gland Bolting | Alloy Steel | UTS 392 N/mm2 |
| Bolts | HT Steel | ASTM A193 Gr.B7 |
| Nuts | Al Br | ASTM A194 Gr.2H |
| Yoke Sleeve | ----- | ----- |

DIMENSIONS (IN MM)

| Nominal Size | Nominal Size (Inches) | F | H (Approx.) | W Approx |
|--------------|-----------------------|-----|-------------|----------|
| 40 | 1.1/2 | 191 | 340 | 178 |
| 50 | 2 | 216 | 355 | 178 |
| 65 | 2.1/2 | 241 | 390 | 210 |
| 80 | 3 | 283 | 435 | 254 |
| 100 | 4 | 305 | 520 | 254 |
| 125 | 5 | 381 | 605 | 305 |
| 150 | 6 | 403 | 710 | 400 |
| 200 | 8 | 419 | 855 | 450 |
| 250 | 10 | 457 | 1020 | 450 |
| 300 | 12 | 502 | 1215 | 500 |

- Notes :** 1. Product images are for illustration purposes only. Actual product may vary.
2. Actual dimensions may change over time, due to continual design improvements. Please confirm before placing order.

Reg. Office : 9, Amar Asha Society, Nr. Ramvadi Bus Stop, Isanpur, Ahmedabad-382443. Gujarat, India. **Ph. :** +91 7490034801, 9824334801

Factory & Correspondence Address : 16, Ambica Industrial Estate, Nr. Vatva Railway Over Bridge, Vatva, Ahmedabad-382440, Gujarat, India.

Ph. : +91 8320479614, 6354226326 **E-mail :** info@pressurevalves.in, marketing@pressurevalves.in **Web :** www.pressurevalves.in

Approved by
NSIC
एन एस आई सी

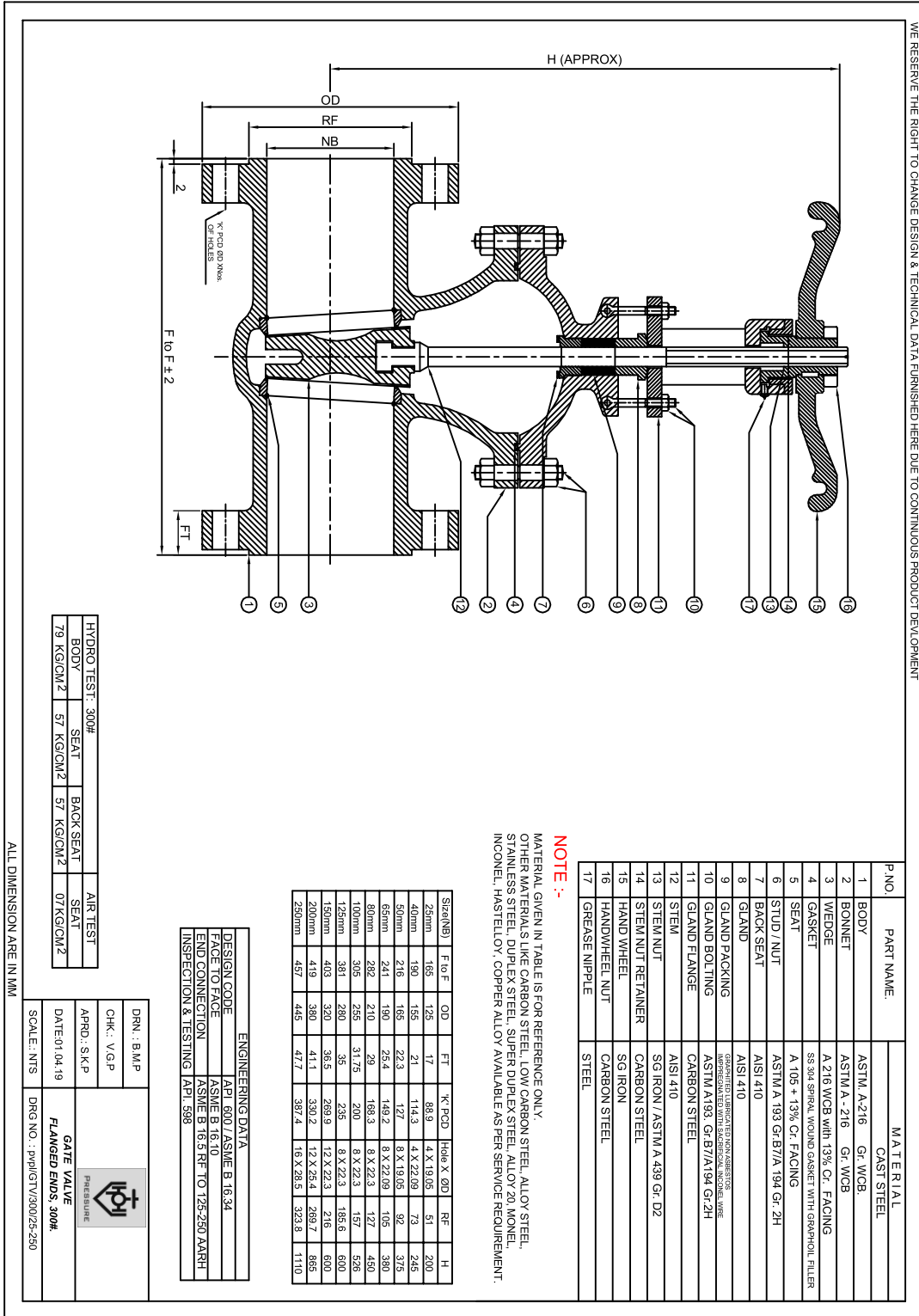


IBR
Approved

MANUFACTURER OF INDUSTRIAL VALVES AND GEARS



PRESSURE BRAND CAST STEEL GATE VALVE FLANGED, CLASS-300 (IBR APPROVED)



WE RESERVE THE RIGHT TO CHANGE DESIGN & TECHNICAL DATA FURNISHED HERE DUE TO CONTINUOUS PRODUCT DEVELOPMENT

| P.NO | PART NAME | MATERIAL |
|------|-------------------|---|
| 1 | BODY | ASTM A-216 Gr. WCB. CAST STEEL |
| 2 | BONNET | ASTM A-216 Gr. WCB. |
| 3 | WEDGE | A 216 WCB WITH 13% Cr. FACING |
| 4 | GASKET | SS 304 SPRING WOUND GASKET WITH GRAPHITE FILLER |
| 5 | SEAT | A 105 + 13% Cr. FACING |
| 6 | STUD / NUT | ASTM A 193 GR. B7A 194 Gr. 2H |
| 7 | BACK SEAT | ASTM A 193 GR. B7A 194 Gr. 2H |
| 8 | GLAND | ASTM A 193 GR. B7A 194 Gr. 2H |
| 9 | GLAND PACKING | GRAPHITIZED LUBRICATED NON-ASBESTOS FIBER REINFORCED WITH SUBSTITUTED INCONEL 600 |
| 10 | GLAND BOLTING | ASTM A 193 GR. B7A 194 Gr. 2H |
| 11 | GLAND FLANGE | CARBON STEEL |
| 12 | STEM | ASTM A 193 GR. B7A 194 Gr. 2H |
| 13 | STEM NUT | SG IRON / ASTM A 439 Gr. D2 |
| 14 | STEM NUT RETAINER | CARBON STEEL |
| 15 | HAND WHEEL | SG IRON |
| 16 | HANDWHEEL NUT | CARBON STEEL |
| 17 | GREASE NIPPLE | STEEL |

| Size(NB) | F to F | OD | FT | K-PCD | Hole X ØD | RF | H |
|----------|--------|-----|-------|-------|-----------|-------|------|
| 25mm | 165 | 125 | 17 | 88.9 | 4 X 19.05 | 51 | 200 |
| 40mm | 190 | 165 | 21 | 114.3 | 4 X 22.09 | 73 | 245 |
| 50mm | 216 | 185 | 22.3 | 127 | 8 X 19.05 | 92 | 375 |
| 65mm | 241 | 190 | 25.4 | 149.2 | 8 X 22.09 | 105 | 380 |
| 80mm | 282 | 210 | 29 | 168.3 | 8 X 22.3 | 127 | 450 |
| 100mm | 305 | 255 | 31.75 | 200 | 8 X 22.3 | 157 | 526 |
| 125mm | 381 | 280 | 35 | 235 | 8 X 22.3 | 185.6 | 600 |
| 150mm | 403 | 320 | 38.5 | 269.9 | 12 X 25.4 | 219 | 600 |
| 200mm | 419 | 380 | 41.1 | 330.2 | 12 X 28.4 | 289.7 | 855 |
| 250mm | 457 | 445 | 47.7 | 397.4 | 16 X 28.5 | 322.8 | 1110 |

| ENGINEERING DATA | |
|----------------------|--------------------------------|
| DESIGN CODE | API 600 / ASME B 16.34 |
| FACE TO FACE | ASME B 16.10 |
| END CONNECTION | ASME B 16.5 RF TO 125-250 AARH |
| INSPECTION & TESTING | API 598 |

| HYDRO TEST: 300# | SEAT | BACK SEAT | AIR TEST |
|-----------------------|-----------------------|-----------------------|----------|
| BODY | 57 KG/CM ² | 57 KG/CM ² | SEAT |
| 79 KG/CM ² | | 57 KG/CM ² | SEAT |
| | | 07 KG/CM ² | |

ALL DIMENSIONS ARE IN MM

| | |
|----------------|--|
| DRN. : B.M.P | |
| CHK. : V.G.P | |
| APRD. : S.K.P | GATE VALVE FLANGED ENDS: 300# |
| DATE: 01-04-19 | |
| SCALE: NTS | DRG. NO. : PVI/GTV/300/25-250 |

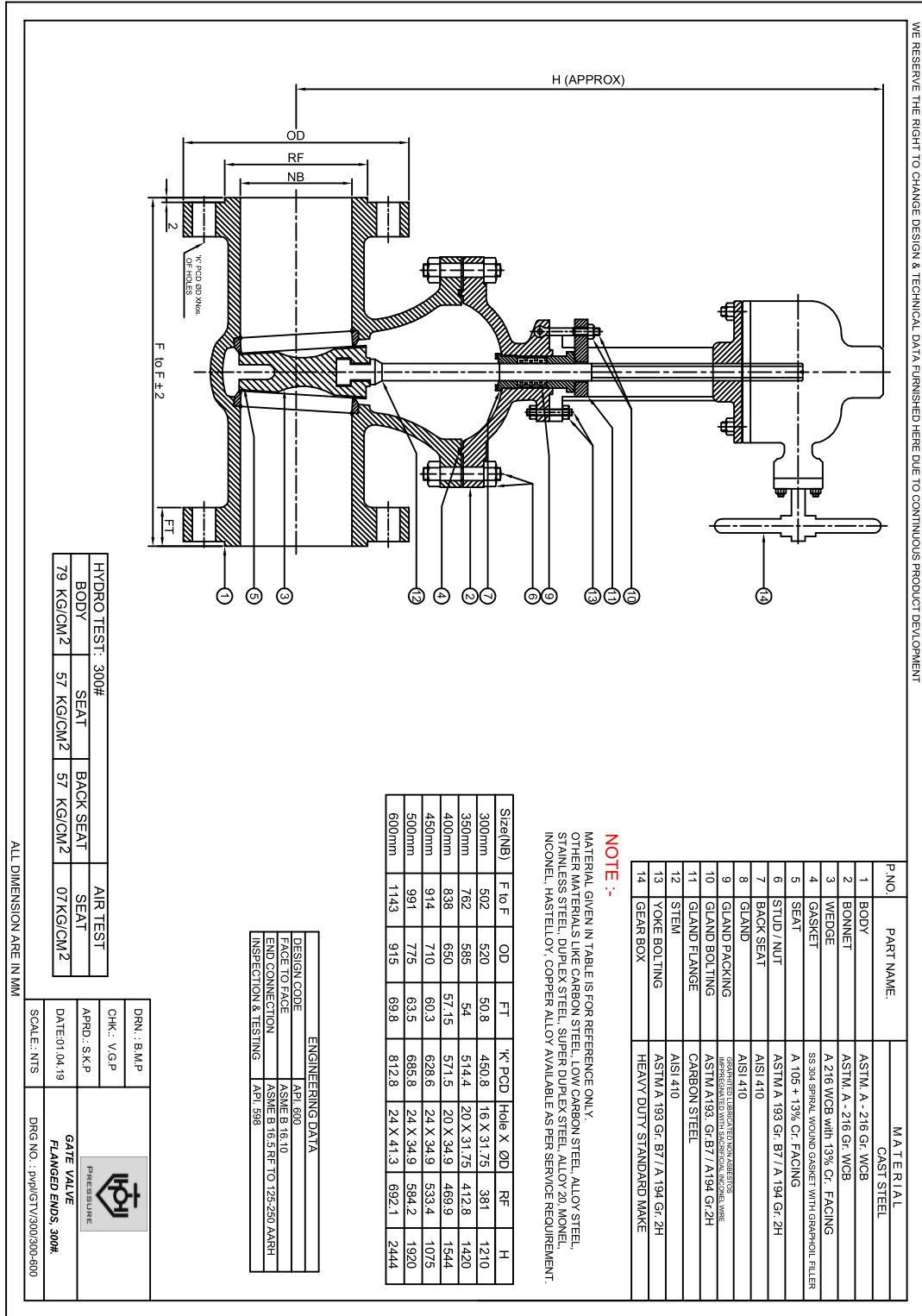
Reg. Office : 9, Amar Asha Society, Nr. Ramvadi Bus Stop, Isanpur, Ahmedabad-382443. Gujarat, India. Ph. : +91 7490034801, 9824334801
 Factory & Correspondence Address : 16, Ambica Industrial Estate, Nr. Vatva Railway Over Bridge, Vatva, Ahmedabad-382440, Gujarat, India.
 Ph. : +91 8320479614, 6354226326 E-mail : info@pressurevalves.in, marketing@pressurevalves.in Web : www.pressurevalves.in



MANUFACTURER OF INDUSTRIAL VALVES AND GEARS



PRESSURE BRAND CAST STEEL GATE VALVE FLANGED, CLASS-300 (IBR APPROVED)



Reg. Office : 9, Amar Asha Society, Nr. Ramvadi Bus Stop, Isanpur, Ahmedabad-382443. Gujarat, India. Ph. : +91 7490034801, 9824334801
 Factory & Correspondence Address : 16, Ambica Industrial Estate, Nr. Vatva Railway Over Bridge, Vatva, Ahmedabad-382440, Gujarat, India.
 Ph. : +91 8320479614, 6354226326 E-mail : info@pressurevalves.in, marketing@pressurevalves.in Web : www.pressurevalves.in