



PRESSURE BRAND CAST STEEL GLOBE VALVE FLANGED, CLASS-600

HSN 84818030

PRODUCT DESCRIPTION

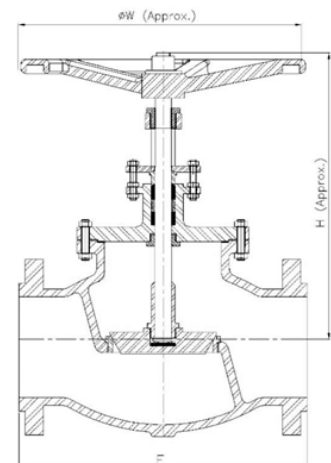
- **Product** : PRESSURE Cast Steel Globe Valve
- **Product Standard** : BS 1873
- **Pressure / Class Rating** : Class 600
- **Body Material cum standard** : CCS (ASTM A-216 Gr. WCB)
- **Product Description** : Bolted Bonnet O/S Yoke Type Rising Stem
- **Type of Seat** : Renewable
- **Type of Disc** : Renewable Disc
- **Trim** : SS AISI-410
- **End Details** : Flanges as per ASME B 16.5 Class 600 RF drilled

TESTING & CERTIFICATION

- **Body Test Pressure** : 153 Barg (2220 Psig.) Hyd.
- **Seat Test Pressure** : 112 Barg (1630 Psig.) Hyd. 6.9barg 100 Psig. (AIR)
- Our Works' Test Certificate is furnished with every supply.

SIZES / DIMENSIONS

Nominal Size	Nominal Size (Inches)	F	H (Approx)	W(Approx)
40	1.1/2	242	305	200
50	2	292	360	254
65	2.1/2	330	405	305
80	3	356	450	305
100	4	432	525	450
150	6	559	670	560
200	8	660	740	600



MATERIALS OF CONSTRUCTION

Components	Materials	Specifications
Body, Bonnet, Disc, Gland Flange	C.C.S.	ASTM A216 Gr. WCB
Stem, Back Seat Bush, Body Seat Ring, Valve Disc Ring, Gland Follower, Lantern Ring & Thrust Plate	Stainless Steel	AISI-410
Gasket	Spiral Wound S.S. 304 with Graphite Filler	—
Gland Packing	Expanded Pure Flexible Graphite	—
Fasteners	Mild Steel	—
Yoke Bush	Aluminum Bronze	—
Handwheel	M.I./D.I	—

Notes : 1. Product images are for illustration purposes only. Actual product may vary.

2. Actual dimensions may change over time, due to continual design improvements. Please confirm before placing order

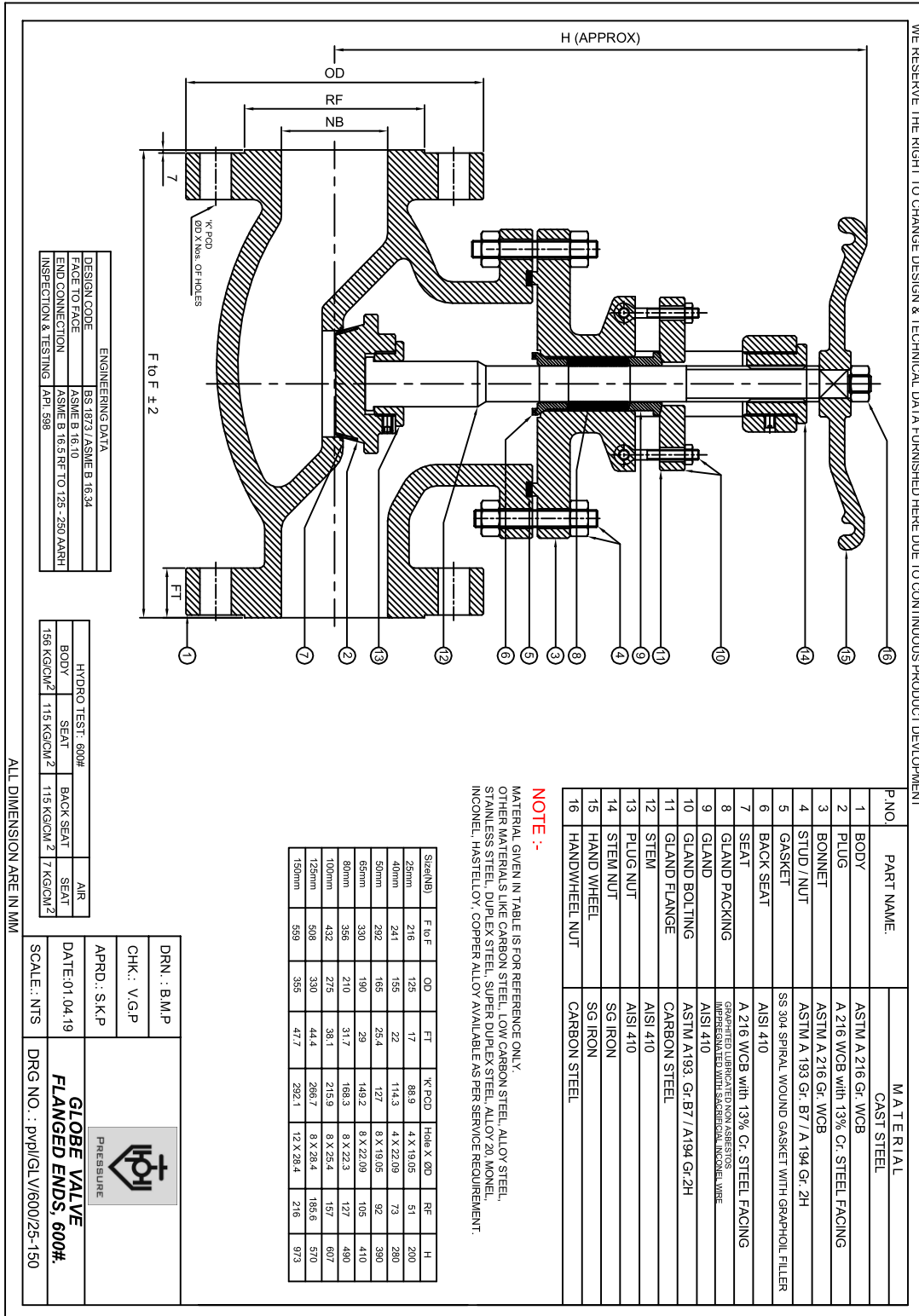
Reg. Office : 9, Amar Asha Society, Nr. Ramvadi Bus Stop, Isanpur, Ahmedabad-382443. Gujarat, India. **Ph.** : +91 7490034801, 9824334801

Factory & Correspondence Address : 16, Ambica Industrial Estate, Nr. Vatva Railway Over Bridge, Vatva, Ahmedabad-382440, Gujarat, India.

Ph. : +91 8320479614, 6354226326 **E-mail** : info@pressurevalves.in, marketing@pressurevalves.in **Web** : www.pressurevalves.in



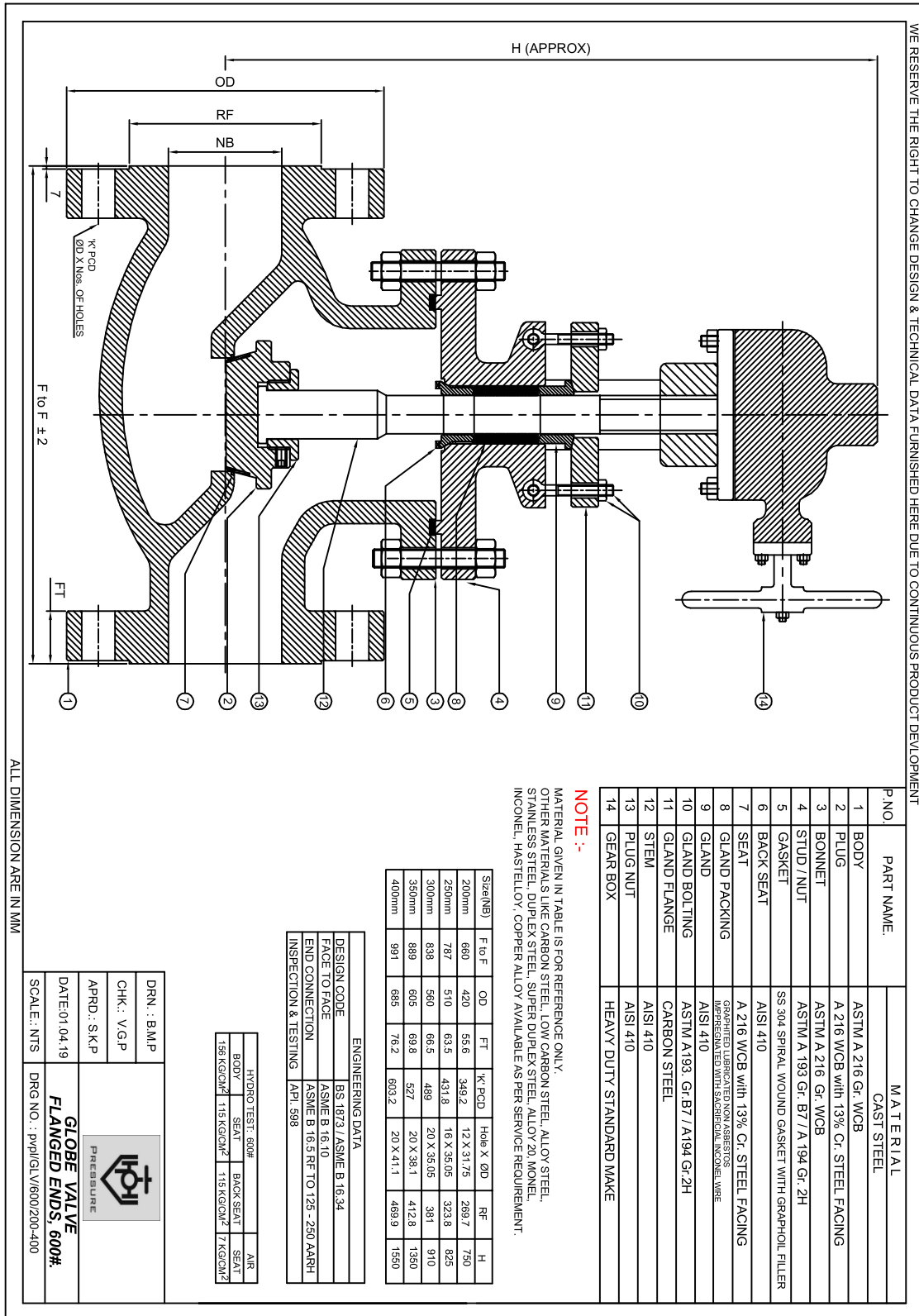
PRESSURE BRAND CAST STEEL GLOBE VALVE FLANGED, CLASS-600



Reg. Office : 9, Amar Asha Society, Nr. Ramvadi Bus Stop, Isanpur, Ahmedabad-382443. Gujarat, India. Ph. : +91 7490034801, 9824334801
 Factory & Correspondence Address : 16, Ambica Industrial Estate, Nr. Vatva Railway Over Bridge, Vatva, Ahmedabad-382440, Gujarat, India.
 Ph. : +91 8320479614, 6354226326 E-mail : info@pressurevalves.in, marketing@pressurevalves.in Web : www.pressurevalves.in



PRESSURE BRAND CAST STEEL GLOBE VALVE FLANGED, CLASS-600



NOTE :-

MATERIAL GIVEN IN TABLE IS FOR REFERENCE ONLY.
 OTHER MATERIALS LIKE CARBON STEEL, LOW CARBON STEEL, ALLOY STEEL,
 STAINLESS STEEL, DUPLEX STEEL, SUPER DUPLEX STEEL, ALLOY 20 MONEL,
 INCONEL, HASTELLOY, COPPER ALLOY AVAILABLE AS PER SERVICE REQUIREMENT.