



## PRESSURE BRAND CAST STEEL GLOBE VALVE FLANGED, CLASS-300 (IBR APPROVED)

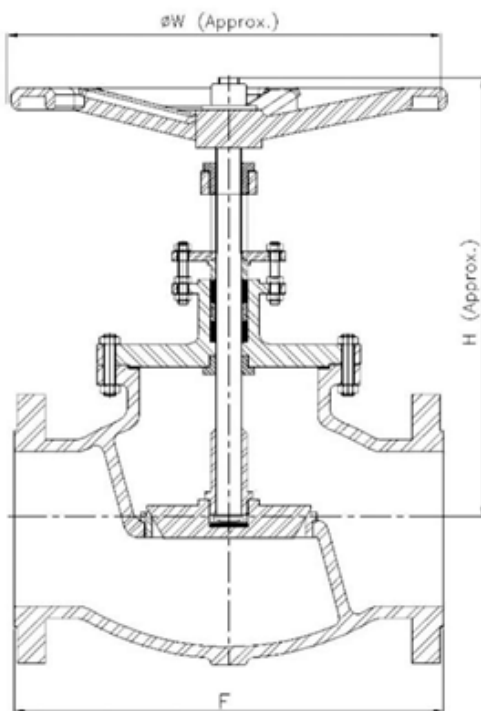
### PRODUCT DESCRIPTION

- **Product** : 'PRESSURE' Cast Steel Globe Valve
- **Product Standard** : BS 1873
- **Pressure / Class / Rating** : Class-300
- **Body Material cum Standard** : CCS (ASTM A216 Gr.WCB)
- **Description** : Bolted Cover, Outside Screw & Yoke Type, Rising Stem
- **Type of Seat** : Renewable seat
- **Type of Disc** : Renewable disc
- **Trim** : Stem SS AISI-410
- **Yoke Bush** : Aluminum Bronze
- **Gland Packing** : Expanded Pure Flexible Graphite
- **End Details** : Flanges as per ANSI B 16.5 Class 300 R.F. drilled

HSN 84818030

### APPLICATION

Water	Oil	Steam
-------	-----	-------



### TESTING & CERTIFICATION

- **Body Test Pressure** : 80 Bar g (1102 Psig) Hyd.
- **Seat Test Pressure** : 58 Bar g (815 Psig) Hyd. & 6.9 Bar g (100 Psig) Air
- **Tested as per** API 598 / ANSI B16.34 / BS : 6755 Part 1
- **Maximum Working Temperature**: 425°C
- Test Certificate in Form III-C as per IBR is furnished with every supply.

**Reg. Office** :9, Amar Asha Society, Nr. Ramvadi Bus Stop, Isanpur, Ahmedabad-382443. Gujarat, India. **Ph.** : +91 7490034801, 9824334801

**Factory & Correspondence Address** : 16, Ambica Industrial Estate, Nr. Vatva Railway Over Bridge, Vatva, Ahmedabad-382440, Gujarat, India.

**Ph.** : +91 8320479614, 6354226326 **E-mail** : info@pressurevalves.in, marketing@pressurevalves.in **Web** : www.pressurevalves.in

Approved by  
**NSIC**  
एन एस आई सी

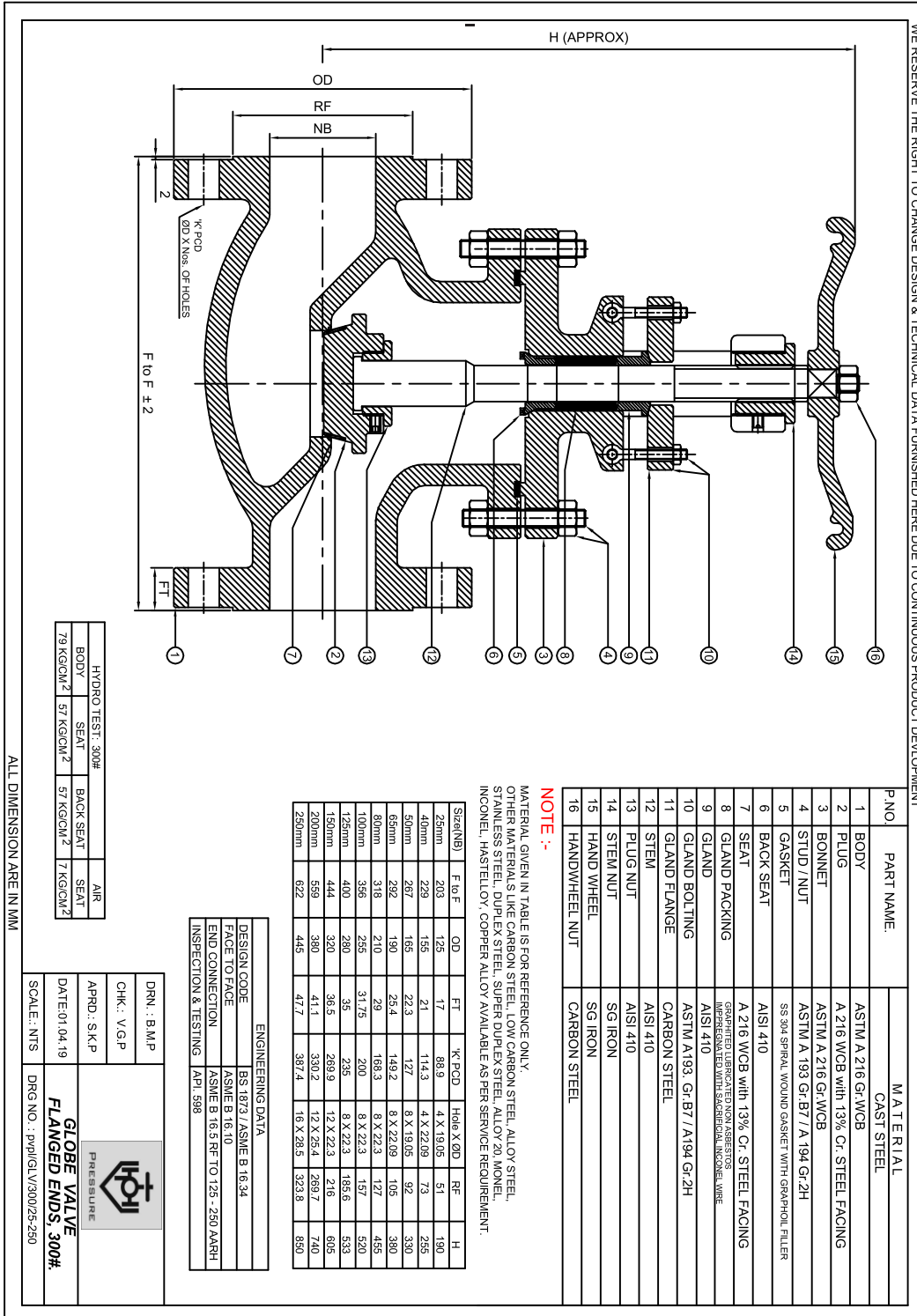


**IBR**  
Approved

**MANUFACTURER OF INDUSTRIAL VALVES AND GEARS**



## PRESSURE BRAND CAST STEEL GLOBE VALVE FLANGED, CLASS-300 (IBR APPROVED)



WE RESERVE THE RIGHT TO CHANGE DESIGN & TECHNICAL DATA FURNISHED HERE DUE TO CONTINUOUS PRODUCT DEVELOPMENT.

P.NO	PART NAME	MATERIAL
1	BODY	ASTM A 216 Gr-WCB CAST STEEL
2	PLUG	A 216 WCB with 13% Cr STEEL FACING
3	BONNET	ASTM A 216 Gr-WCB
4	STUD / NUT	ASTM A 193 Gr-B7 / A 194 Gr-2H
5	GASKET	SS 304 SPIRAL WOUND GASKET WITH GRAPHITE FILLER
6	BACK SEAT	AISI 410
7	SEAT	A 216 WCB with 13% Cr STEEL FACING
8	GLAND PACKING	GRAPHITE FIBRE REINFORCED NON ASBESTOS GASKET WITH 30% MOISTURE RESISTANT WIRE
9	GLAND	AISI 410
10	GLAND BOLTING	ASTM A193 Gr-B7 / A194 Gr-2H
11	GLAND FLANGE	CARBON STEEL
12	STEM	AISI 410
13	PLUG-NUT	AISI 410
14	STEM NUT	SG IRON
15	HAND WHEEL	SG IRON
16	HANDWHEEL NUT	CARBON STEEL

**NOTE :-**  
MATERIAL GIVEN IN TABLE IS FOR REFERENCE ONLY.  
OTHER MATERIALS LIKE CARBON STEEL, LOW CARBON STEEL, ALLOY STEEL,  
STAINLESS STEEL, DUPLEX STEEL, SUPER DUPLEX STEEL, ALLOY 20, MONEL,  
INCONEL, HASTELLOY, COPPER ALLOY AVAILABLE AS PER SERVICE REQUIREMENT.

Size(NB)	OD	FT	K/F OD	Hole X OD	RF	H
25mm	125	17	88.9	4 X 19.05	51	190
40mm	229	31	114.3	4 X 22.09	73	255
50mm	267	36	127	8 X 19.05	92	380
65mm	292	40	148.2	8 X 22.09	105	380
80mm	318	43	168.3	8 X 22.3	127	455
100mm	356	47	200	8 X 22.3	157	520
125mm	400	53	235	8 X 22.3	195.6	533
150mm	444	60	269.9	12 X 22.3	216	605
200mm	559	77	381.2	12 X 25.4	289.7	740
250mm	622	86	447.7	16 X 28.5	323.8	850

ENGINEERING DATA	
DESIGN CODE	BS 1873 / ASME B 16.34
FACE TO FACE	ASME B 16.10
END CONNECTION	ASME B 16.5 RF TO 125 - 250 ANRH
INSPECTION & TESTING	API 598

HYDRO TEST: 300#			
BODY	SEAT	BACK SEAT	AIR
79 KG/CM <sup>2</sup>	57 KG/CM <sup>2</sup>	57 KG/CM <sup>2</sup>	7 KG/CM <sup>2</sup>

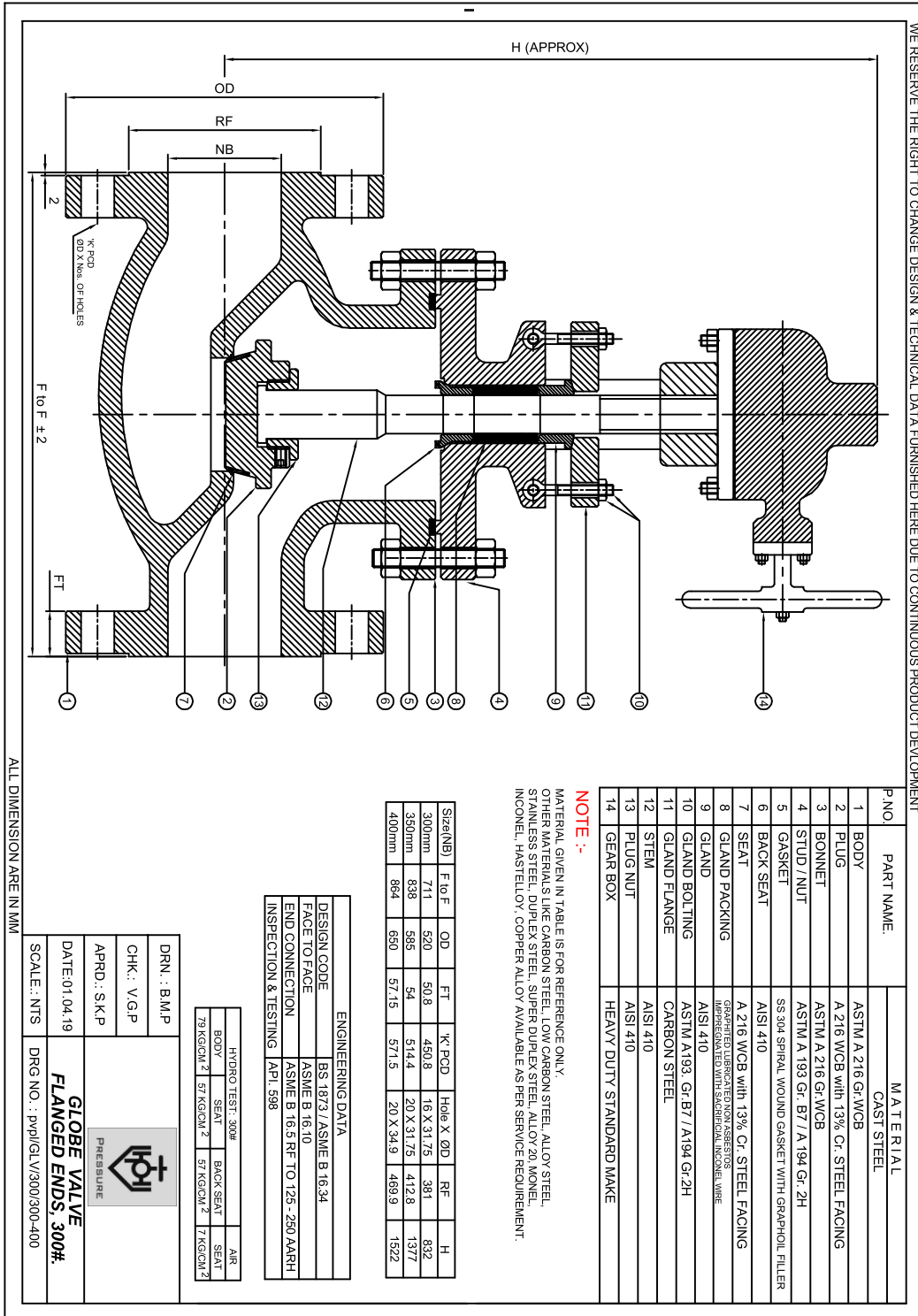
DRN.: B.M.P	
CHK.: V.G.P	
APRD.: S.K.P	
DATE: 01.04.19	
SCALE: NTS	<b>FLANGED ENDS, 300#</b>

ALL DIMENSION ARE IN MM

Reg. Office : 9, Amar Asha Society, Nr. Ramvadi Bus Stop, Isanpur, Ahmedabad-382443. Gujarat, India. Ph. : +91 7490034801, 9824334801  
 Factory & Correspondence Address : 16, Ambica Industrial Estate, Nr. Vatva Railway Over Bridge, Vatva, Ahmedabad-382440, Gujarat, India.  
 Ph. : +91 8320479614, 6354226326 E-mail : info@pressurevalves.in, marketing@pressurevalves.in Web : www.pressurevalves.in



## PRESSURE BRAND CAST STEEL GLOBE VALVE FLANGED, CLASS-300 (IBR APPROVED)



P.NO	PART NAME	MATERIAL
1	BODY	ASTM A 216 Gr.WCB CAST STEEL
2	PLUG	A 216 WCB with 13% Cr. STEEL FACING
3	BONNET	ASTM A 216 Gr.WCB
4	STUD / NUT	ASTM A 193 Gr. B7 / A 194 Gr. 2H
5	GASKET	SS 304 SPIRAL WOUND GASKET WITH GRAPHOLITE FILLER
6	BACK SEAT	AISI 410
7	SEAT	A 216 WCB with 13% Cr. STEEL FACING
8	GLAND PACKING	GRAPHITE LUBRICATED NON ASBESTOS FIBER WITH STANDARD ANCHOR WIRE
9	GLAND	AISI 410
10	GLAND BOLTING	ASTM A193 Gr. B7 / A194 Gr. 2H
11	GLAND FLANGE	CARBON STEEL
12	STEM	AISI 410
13	PLUG NUT	AISI 410
14	GEAR BOX	HEAVY DUTY STANDARD MAKE

**NOTE :-**

MATERIAL GIVEN IN TABLE IS FOR REFERENCE ONLY.  
OTHER MATERIALS LIKE CARBON STEEL, LOW CARBON STEEL, ALLOY STEEL, STAINLESS STEEL, DUPLEX STEEL, SUPER DUPLEX STEEL, ALLOY 20, MONEL, INCONEL, HASTELLOY, COPPER ALLOY AVAILABLE AS PER SERVICE REQUIREMENT.

Size(NB)	F to F	OD	FT	% PCD	Hole X ØD	RF	H
300mm	711	520	50.8	450.8	16 X 31.75	381	832
350mm	838	585	54	514.4	20 X 31.75	412.8	1377
400mm	884	650	57.15	571.5	20 X 34.9	459.9	1522

ENGINEERING DATA	
DESIGN CODE	BS 1873 / ASME B 16.34
FACE TO FACE	ASME B 16.10
END CONNECTION	ASME B 16.5 RF TO 125-280 AARRH
INSPECTION & TESTING	API 598

HYDRO TEST: 300#			
BODY	SEAT	BACK SEAT	SEAT
79 KG/CM <sup>2</sup>	57 KG/CM <sup>2</sup>	57 KG/CM <sup>2</sup>	7 KG/CM <sup>2</sup>

ALL DIMENSION ARE IN MM

DRN : B.M.P	
CHK : V.G.P	
APRD : S.K.P	
DATE: 01/04/19	
SCALE: NTS	<b>GLOBE VALVE FLANGED ENDS, 300#.</b>
DRG NO. : pvpjqlv/300/300-400	

Reg. Office : 9, Amar Asha Society, Nr. Ramvadi Bus Stop, Isanpur, Ahmedabad-382443. Gujarat, India. Ph. : +91 7490034801, 9824334801  
 Factory & Correspondence Address : 16, Ambica Industrial Estate, Nr. Vatva Railway Over Bridge, Vatva, Ahmedabad-382440, Gujarat, India.  
 Ph. : +91 8320479614, 6354226326 E-mail : info@pressurevalves.in, marketing@pressurevalves.in Web : www.pressurevalves.in